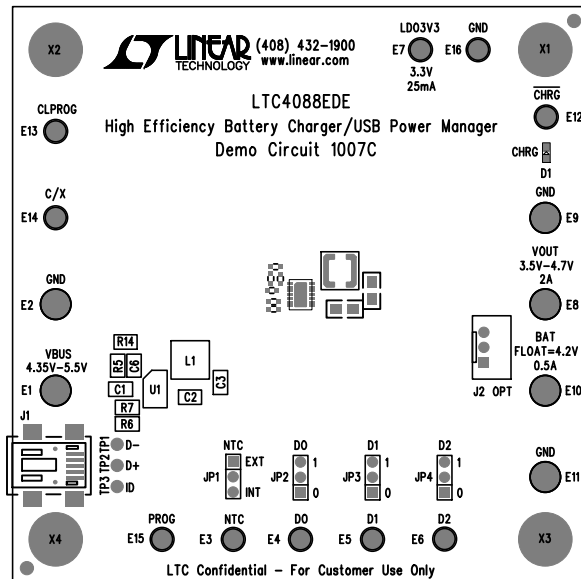
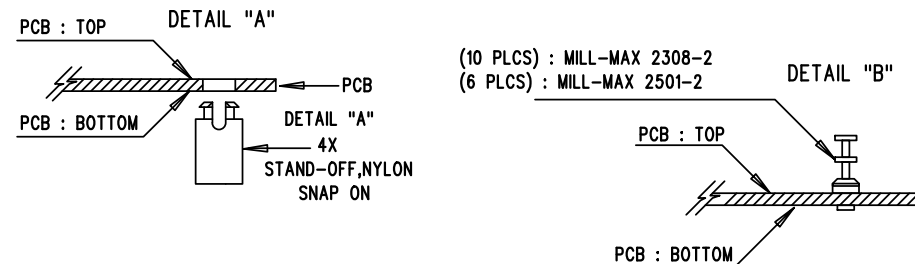


REVISION HISTORY				
ECO	REV	DESCRIPTION	APPR	DATE
-	1	PROTOTYPE	MARTY M.	1-14-16

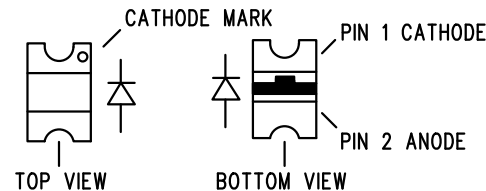



NOTES: UNLESS OTHERWISE SPECIFIED

1. WORKMANSHIP SHALL BE IN ACCORDANCE WITH IPC-A-610, CLASS 2.
2. ASSEMBLY REFLOW PROFILE SHALL BE IN ACCORDANCE WITH J-STD-020 WITH MAXIMUM SOLDER TEMPERATURE OF 250 DEGREES CELSIUS.
3. PARTS TO OMIT WILL BE SPECIFIED ON THE BILL OF MATERIALS
LOCATIONS OF OMITTED PARTS SHALL BE FREE OF SOLDER.
MASK THE SOLDER STENCIL WHERE SMT PARTS ARE OMITTED.
4. INSTALL SHUNTS AS SHOWN ON ASSY DRAWING.
5. DEPANELIZE BOARDS AFTER ASSEMBLY AND ROUTE-OUT THE BREAKOUT TABS ON FOUR SIDES OF THE BOARD EDGE.
6. DO NOT APPLY ANY KIND OF ASSEMBLY STAMP OR QA STAMP TO ANY BOARD.
7. INSTALL TURRETS, STAND-OFFS AND BANANA JACKS AS SHOWN BELOW:



8. INSTALL LED D1 AS SHOWN:



APPROVALS		 LINEAR TECHNOLOGY		1630 MCCARTHY BLVD MILPITAS, CA 95035 PH: (408)432-1900 www.linear.com LTC CONFIDENTIAL- FOR CUSTOMER USE ONLY	
PCB DES.	NC	TITLE: TOP ASSEMBLY DRAWING: High Efficiency Battery Charger/USB Power Manager			
APP ENG.	MARTY M.				
		SIZE	IC NO.	REV.	
		N/A	LTC4088 DEMO CIRCUIT 1007C	1	
SCALE = NONE		SHT 1 of 2			